



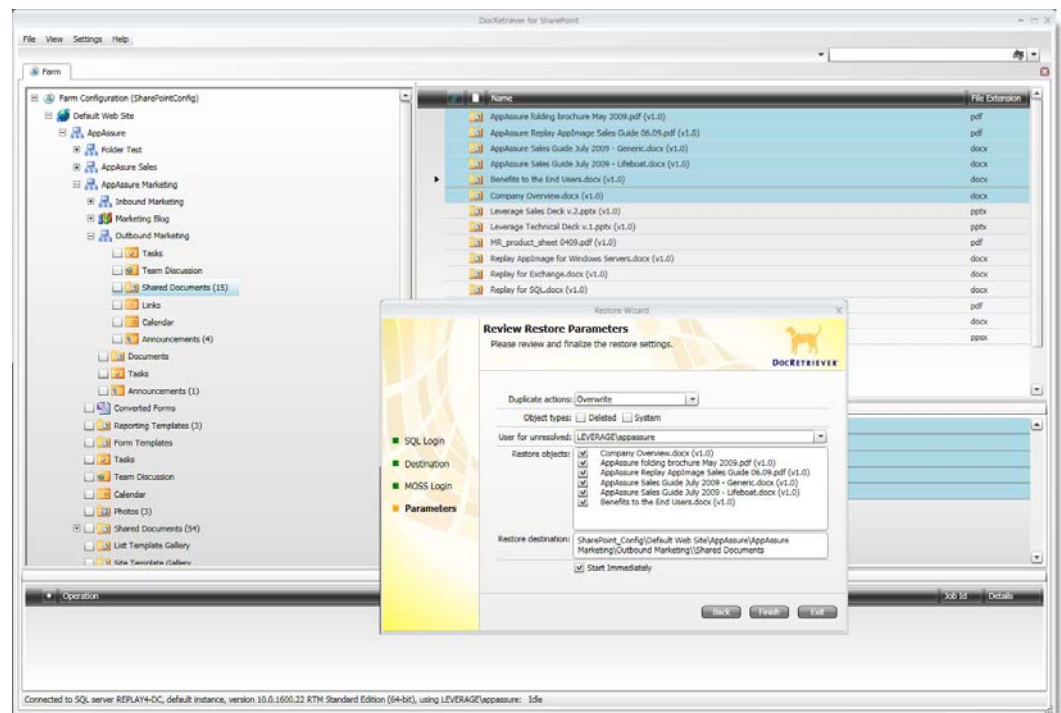
DocRetriever saves time and money by blowing away traditional recovery windows, eliminating brick-level backups.

With detailed searches in seconds, you're never more than a few clicks away from recovering a lost document with this affordable and easy-to-use software package.

DOCRETRIEVER FOR SHAREPOINT
RESTORE SHAREPOINT DOCUMENTS AND LIST ITEMS FROM YOUR
NATIVE SHAREPOINT BACKUPS IN MINUTES, WITHOUT
REQUIRING A SHAREPOINT RECOVERY FARM

DocRetriever for SharePoint dramatically simplifies the process of restoring individual documents, sites, sub-sites and folders. SharePoint Administrators no longer need to spend countless hours rebuilding your entire production database, or worry about deploying a temporary SharePoint recovery farm, just to recover an individual document or list item.

DocRetriever connects directly to native SQL Server backup files, as well as any mountable application aware snapshot, and enables you to browse SharePoint objects as though you were connected to a live SharePoint site. SharePoint objects such as sites, site hierarchies, list items, libraries and views can be recovered directly to the production SharePoint servers, to alternate SharePoint servers or directly to a file system, with complete preservation of all permissions and meta-data.



Key Benefits

- Respond to SharePoint recovery requests in minutes
- Restore SharePoint objects directly from a backup and avoid using a SharePoint recovery farm
- Retrieve files in the content databases and restore them to an NTFS folder, even if the site is offline or inaccessible

More Information:
www.re-soft.com/sharepoint

Key Features

- Easy to use SharePoint browser to browse all documents and objects within a Farm, Site and Site hierarchies directly from a backup.
- Restores documents, item lists, libraries with permissions intact without the need for a separate recovery server.
- Restores multiple versions of same document to restore.
- Restores sites and sub-sites with permissions intact.
- Restore documents and items directly to the original production environment, to a file system or to alternate locations within a live SharePoint server.
- Synchronizes the original with the backup by only restoring missing items.
- Option to preserve site, sub-site and object level permissions.
- Search the backups for any document in seconds.
- Restore directly from SharePoint SQL Server back-up files.
- All operations are audited and logged so you can easily see what objects has been added or modified.
- All restore operations are performed through the supported SharePoint APIs.
- Installs in minutes and requires .NET 3.5 and access to a local instance of SQL Server or SQL Express.

Supported Source Systems

SQL Server 2005, and 2008 SharePoint databases
SharePoint / WSS V3 full backups, STSADM, or SQL Server
SQL Server 2005, and 2008 SharePoint database backups
Replay 4 Snapshots
SAN Snapshots
Microsoft Data Protection Manager backups

© AppAssure Inc.