



**MICROSOFT OCS SEARCH AND DISCOVERY
USERS, SUPERVISORS & COMPLIANCE CAN VIEW PAST IM
CONVERSATIONS IN THE OCS CLIENTS**

OCS Archive Viewer:

- Fully Searchable Chat conversations
- Display by Date View
- Display by Person
- No Client Installation
- Advanced Search Features

"We now have peace of mind knowing that we will be able to respond quickly to compliance audits."

"Instant Archive Viewer has enabled us to mine our OCS 2007 archives for valuable business intelligence."

"My users are relying less on email because they now know they can easily access the contents of past IM conversations."

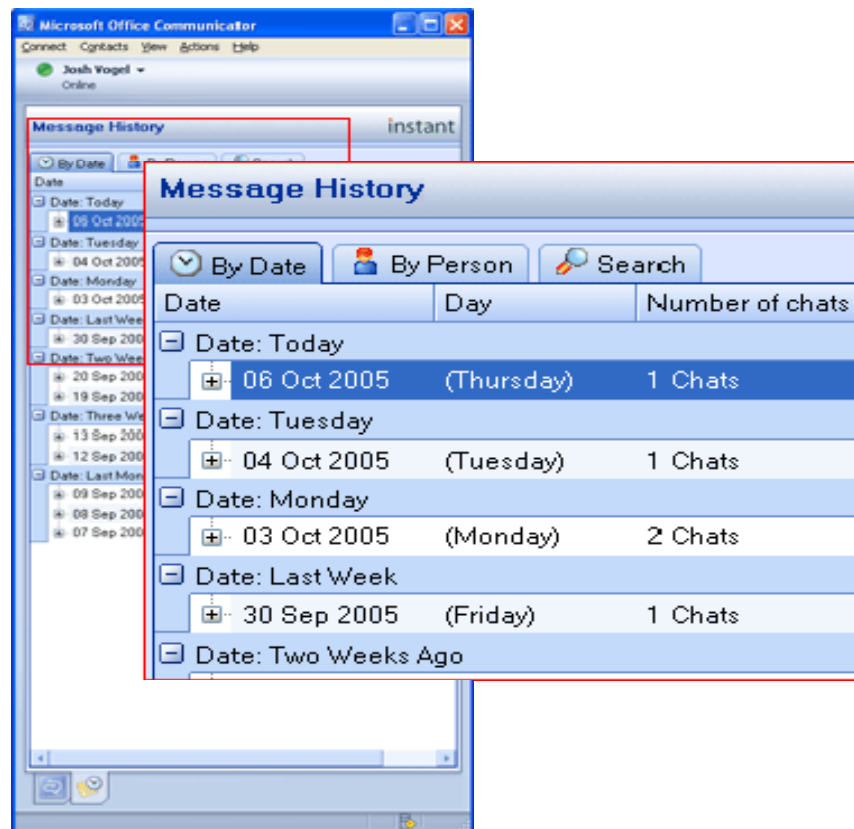
More Information:

www.re-soft.com/instantmessaging/

Do you need to monitor and audit OCS conversations for internal policy enforcement and/or external regulatory requirements?

Do you want to convert the contents of your OCS archives (LCSLog Database) into a usable business asset?

Do your users need access to their OCS conversation history?



Instant Archive Viewer offers three distinct roles:

End User Search and Retrieval

This role gives end users access to their own previous conversations without intervention from the help desk.

The web-based interface is tightly integrated within the Office Communicator client (it sits in the client as a tab extension that is deployed via a simple regedit) Users can quickly and intuitively search by date, by person, or conduct advanced keyword searches Users only have access to their own conversations - seamlessly accessing the LCSLog database with secured access.

System Requirements:

- *Windows 2000 , (Professional, Server, Advanced Server), Windows XP (Pro), Windows Server 2003.*
- *Microsoft .NET Framework*
- *Internet Information Services (IIS)*

Departmental Search and Retrieval

This role gives managers the ability to monitor the conversations of employees in their respective departments.

Managers can search conversations within an entire AD group - without any need to understand the LCSLog database. Security controls restrict managers' access to the conversations from within their group or groups The user interface can be quickly integrated with the Communicator client

Enterprise Search and Discovery

This role consists of a powerful search and discovery module that enables a user with 'super admin' privileges to conduct organization-wide audits of all conversations by all users in the environment.

Locate conversations between users, both 1-to-1 and multi-party Locate specific text within conversations Locate conversations by phrase and by user Perform complex searches, including advanced Boolean searches Save custom queries for reuse within defined discovery projects Create and manage discovery-based projects that consist of collections of related queries In addition, all roles share these common features:

Access is secured via various authentication mechanisms, including Windows pass-through authentication Simple 1-to-1 conversations can be searched/retrieved/audited Multi-party conversations can be searched/retrieved/audited Conversations and search results can be exported to PDF No software is installed on the client