



**PSTSTATION CORPORATE**  
*AUTOMATIC PST DETECTION, BACKUP, ARCHIVE AND REPORTING*

**PSTStation:**

- Automatic detection of all PST files on workstations and corporate files servers from a central location
- High speed scan with more than 200 GB scanned in less than an hour
- Remote backup of open PST files
- Bulk or selective ingestion of PSTs in a archiving repository
- Change PST's locations and update Outlook® profiles on remote computers
- Reduce PST storage space by running frequent compaction tasks
- VIPs' laptops backup with incremental backup
- PST size monitoring
- Over 40 types of reports on detected PST

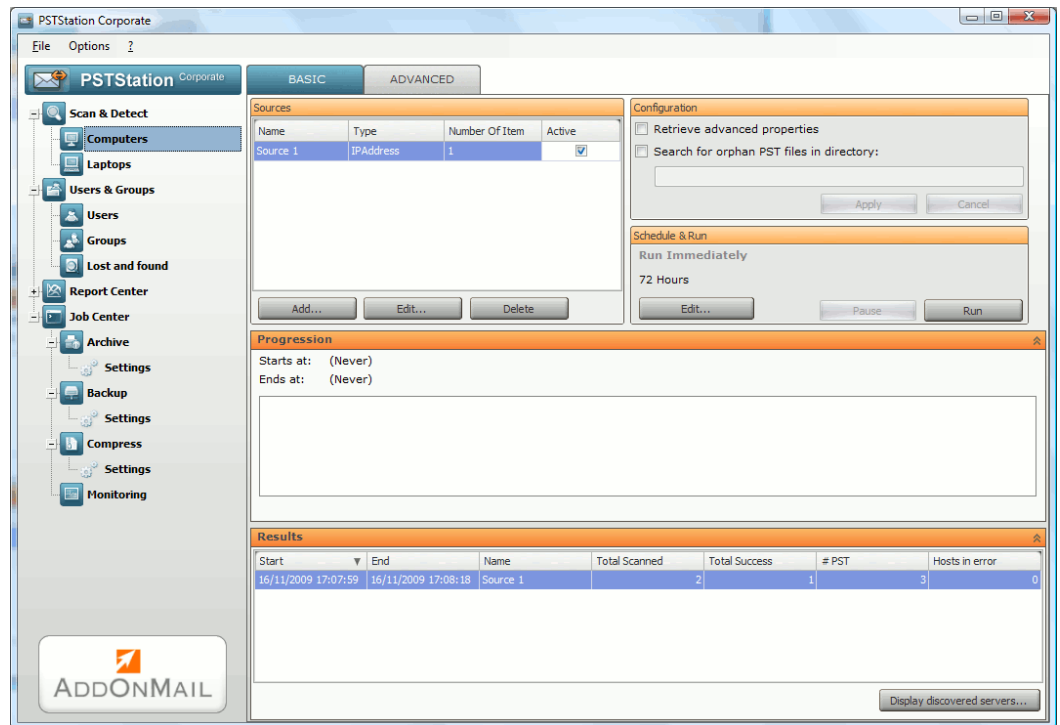
*"Four out of five users employ personal archives (PST files) to store messaging system data. That reveals the significant percentage of messaging system content that is stored outside a central, IT-managed repository".*  
Osterman Research

[www.re-soft.com/pst](http://www.re-soft.com/pst)

**Automatic detection of Outlook® PST file**

PSTStation Corporate's scan feature detects all PSTs stored on workstations or corporate shared file servers. It can detect PST files either from live Outlook profiles, or by scanning directories. Advanced Scan also allows administrators to find empty or broken files as well as hidden PST files. With "Direct File Access", you can now scan 200 GB of PST files in less than 1 hour through your corporate network.

Thanks to its reconciliation process, PSTStation Corporate can reconcile orphaned PSTs (those not registered in a live Outlook profile) with its original owner.



**Remote or central backup for open PSTs stored on workstations and shared file servers**

Administrators can select either a computer, a user or just one PST to back up. To backup PSTs stored on a server, simply select the root directory on the remote server.

Backup can be a full or an incremental: In incremental jobs, only new emails sent or received since the last backup will be saved. This dramatically reduces the volume of data as well as the time to backup all the PSTs.

PSTStation Client allows you to back up PST files while Outlook is in use on the remote workstation. PSTStation Client runs in the user's session on the remote computer. Password protected PSTs can be backed up with an option to remove a user's password or to forward it to the archive. The destination path can be local to the PSTStation server or remote to any storage device that can be accessed through the network.

*The ReSoft process was informative and efficient, and helped us to meet an urgent deadline.*

**Scott Cuomo**  
**Seward & Kissel LLP**

*The product runs like a champ. It does the job perfectly.*

**Steven Platt**  
**Billingsley Company**

*ReSoft made my software purchase extremely easy...I was up and running within minutes!*

**Damien Noble**  
**Force Protection Inc.**

*Your product was great and helped us gather some really important information.*

**Stephen Powers**  
**Powers Fasteners Inc.**



© AddOnMail 2006-2010

Backups are stored on destination repositories in standard Outlook PST format. When the administrator needs to restore a user's PST file which has been backed up previously, they simply have to send back the archived PST to the user.

Backup jobs can be fully integrated into your standard operating schedule by using PSTStation's built-in scheduler. For instance incremental backup jobs could be scheduled from Monday to Friday and full backup on Saturday.

#### **Backup Outlook 200x PST files stored on VIPs' laptops**

Registered laptops can now notify a PSTStation Server when it connects to the corporate network and is ready to backup. Once registered, a computer receives its backup commands from the server and backs up local PST files to any other location on the network. The backup is incremental and can save open PST files even if Microsoft Outlook 200x is running on remote laptops.

#### **Bulk or selective ingestion of PSTs in archiving repositories**

Organizations can move their PST files to a long term archiving solution, deduplicate and compress emails stored in the PST files. Administrators can select one PST, a group of PSTs or the entire content of a shared file server. Open PST files as well as password protected PST files are fully supported.

#### **Change PST's locations and update Outlook® profile on remote computers**

Administrators can now change the location of PSTs files when they change hardware storage ; for instance to use low cost disk arrays. The built-in, automatic update of the remote Outlook profile, allows rearranging and optimization of PST storage without adding extra heavy manual work to update remote Outlook® profiles. This feature allows the organization to:

- Move PSTs from one server to another
- Move PSTs from local drives to a shared file server,
- Move back PSTs from a shared file server to a local drive (used to come back in Microsoft official supported configuration)
- Update remote Outlook profiles, enabling for instance a change to the mapped drive in its UNC path.

#### **Reduce PST storage with automatic compaction task**

One way to reduce PST storage is to compact your PSTs frequently to recover space from deleted items. This action must be run by the user on the workstation, but is not user friendly and can be time consuming as it freezes the application.

The PSTStation Corporate compaction job allows the administrator to run this task from a central location without any user interaction. PSTStation Corporate compaction is based on the standard Outlook compact process and will preserve 100% of the integrity of the PST files.

#### **PST Size Monitoring**

You can now define a maximum PST size per user, group or individual PST. A definable notification is sent to the administrator and/or the owner if the PST reaches a definable size threshold. The oversize notification can be sent by email.

Generate compliance reports showing all privacy and retention exposures and mine semi-structured file formats. Copy compliance records to WORM volumes and set retention dates. Move all privacy files and metadata to encrypted storage. Perform regular data integrity checks to detect corruptions or modifications.