



## TRANSVault

*Migrate data between email archives, mailboxes and PST Archives*

### Use TransVault to:

- Move data from an archive back into the mailbox
- Move users' data between archive stores
- Move to a new archive platform
- Migrate from Notes to Exchange with minimal impact on end users
- Re-organise your archive stores
- Protect against storage obsolescence

*"I would like to give you all a huge thank you for all your hard work and effort that was put into finding such a speedy solution to migrating Japanese messages. This quick solution has put us in a seriously good light with our client".*

**Warren Marks**  
**SOARsoft Africa.**

*Using TransVault we were able to migrate data as a totally transparent background process, with no time pressures on the IT department and no adverse impact on end users*

**James Morris**  
**Aegis Media**

*"On Monday morning our users came in to find all their e-mails and address books intact and fully functional. We could just get on with business as usual.*

**Eugene van Vuren**  
**Webber Wentzel Bowens**

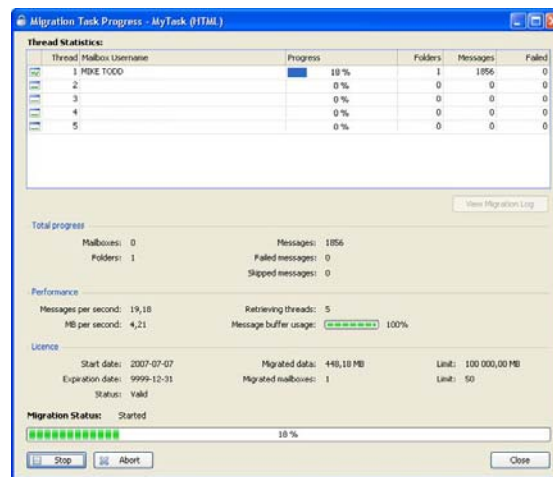
The decision to move to a new e-mail or archiving service should not be constrained by the risk of losing data. Similarly the need to move users between different locations or archive products (e.g. as a result of a re-location or merger) should not threaten the accessibility or manageability of your corporate data.

TransVault™ is a high-performance software application that securely migrates and consolidates email and other related records from one email archive environment, including PST archives, to another, ensuring future accessibility - regardless of the chosen archive, messaging platform or storage medium.

Migration is fast and entirely transparent to users, eliminating the risk of downtime and significantly reducing the costs and IT overheads normally associated with moving large amounts of data.

TransVault also avoids the costs and inconvenience of maintaining 'islands of data', allowing the lifecycle of information to be centrally managed and any e-discovery requests to be conducted against a single data repository.

TransVault is the key to ensuring 100% data availability with 100% user transparency, whilst minimizing risks and costs to your business.



### The Issues

TransVault tackles a number of different scenarios:

**You need to move data from an existing archive back into the users mailbox** - latest versions of common messaging systems have been engineered to handle much larger volumes. In some instances it can make sense to move messages from an existing archiving system back into the user's mailbox.

**You need to move users' data between archive stores** – TransVault lets you quickly, easily and seamlessly move archived data belonging to individuals (or groups of users) to a new archive store, location or organization, within the same - or a different - archive platform.

**You need to move to a new archive platform** - A merger, acquisition or a decision to upgrade functionality can require the need to migrate between different archive platforms. TransVault lets you move, and where necessary, convert data and/or email addresses for the new environment as well as preserve shortcuts.

**More Information:**  
[www.re-soft.com/transvault](http://www.re-soft.com/transvault)

**You want to migrate from Notes to Exchange with minimal impact on end users** – TransVault’s unique ‘Archive First’ strategy minimizes the costs and risks involved in migrating between different email platforms.

**You want to re-organize your archive stores** – TransVault lets you manage and schedule data migrations as part of an archive optimization or re-structuring project.

**You need to protect against storage obsolescence** – The need to retain emails for many years demands the ability to move data between different proprietary storage devices. TransVault offers native support for a number of leading storage platforms, with the ability to separate out individual emails where previously stored as a ‘blob’ or in a ‘CAB’ file.

TransVault brings compliance, user, and operational benefits to migration projects, ensuring company records and business activities are exposed to minimum risk. By using TransVault to migrate you will see the following benefits:

#### **Compliance**

With email discovery now playing such an important role in litigation, maintaining the integrity of historic mail has become a central requirement for IT departments. The ability to quickly and accurately retrieve email from the archive and vouch for its integrity has board-level focus at many corporations.

By migrating data from one or more legacy archives into a new, consolidated archive service, TransVault ensures all data is discoverable from within one environment, avoiding the need for auditors to search across multiple different repositories.

It also provides the best content integrity available in the industry, maintaining full audit logs and discoverability whilst ensuring e-mails are fully functional for end users in the new environment.

For example, benchmark testing has shown that TransVault has much improved Notes to Exchange message format fidelity when compared with both Microsoft and leading 3rd-party mailbox migration applications.

#### **User Benefits**

TransVault ensures zero negative impact on end users. Migrations can take place with users online – there’s no need for any downtime. And when the migration is complete, e-mails and other items are fully usable in the new environment. For example, shortcuts that link to migrated items can be given back to users.

When migrating from Notes to Exchange, TransVault re-formats e-mails, re-writes e-mail addresses and maintains folder structures to ensure that users can get going in Outlook with maximum efficiency - searching, retrieving and re-using items and content from their legacy email records.

#### **Operations**

TransVault minimizes the overheads and timeframes required to complete a successful migration. Its multi-threaded architecture can migrate tens of millions of items in just a few days, and TransVault’s non-invasive approach means you don’t have to work unsociable hours or risk impacting live e-mail servers. You’ll also see tremendous storage savings by way of de-duplication and compression.

© TransVault Ltd