



ARCHIVE ONE POLICY
Exchange Mailbox Size Management and PST migration/elimination

For organizations that rely on Microsoft Exchange and need to enforce company Policy for e-mail retention and retrieval, **Archive One Policy** can help to reduce exposure to legal risks while better managing resources for improved productivity.

Archive One Policy will help with:

- Enforcing company e-mail control, retention and retrieval requirements

- Identifying, migrating and eliminating **PST files** across the network

- Ensuring the archived email is indexed, archived and stored effectively.

- Improving the Exchange Server performance by ensuring the optimum levels of messages are held on the Exchange server.

- Reducing Total Cost of Ownership - easy to implement and manage.

- Interfacing with leading storage management applications.

- Reducing legal risks by retaining and recovering copies of e-mails.

- Flexible and adaptable structure, economical and scalable from tens to thousands of users.

© C2C Systems Ltd.

Archive One Policy is an archiving, retention and retrieval management application for Microsoft Exchange mailboxes, PST files and Public Folders designed for organizations that need an effective, robust system to meet for e-mail management and retention needs while assisting with Mailbox Size Management.

Archive One Policy – Mailbox Retain and Retrieve

- Enforces e-mail retention policies for mailboxes
- Long term, secure retention of e-mail.
- Fast and easy, search and retrieve messages through user driven web interface.
- Reduces legal exposure. Easy to Install, Use and Manage.
- Intuitive, comprehensive rules engine for flexible multi-policy archiving.
- Large range of criteria for selective archiving.
- Improves user productivity.
- Reduces the need for mailbox quotas.
- Writes archive and index to choice of SAN, NAS, Optical, Tape, WORM etc as selected by the user organization.
- Archives in standard compressed format for efficient storage and recovers messages to original status

Archive One Policy - PST Identification, Migration & Elimination!

- Discovers all PST files known to Outlook Mailboxes.
- Scheduled or exception driven processing.
- Archives messages and attachments from PSTs according to centrally controlled criteria.
- PST messages and attachments indexed and archived as per all other e-mail data.
- Message links can be installed in PSTs or moved back into the mailbox for user self-service discovery and recovery of messages.
- PST compaction or deletion to recover space.

Mailbox	Mailbox Size(K)	Mailbox Quota(K)	PST Size...	Process	Migration Progress	Title	Machine	File Path
Jane Watson	2	Unlimited	96	No	N/A		two2	C:\Documents an...
Heath Clarke	34269	100000	368	No	N/A	test-...	C2CUK01	C:\Documents an...
Jerry Ander...	0	Unlimited	10681	Yes	N/A	c2c	C2CUK90	C:\Documents an...
Janine Rose	0	50000	19137	Yes	N/A	Large	C2CUK13	C:\Documents an...
Christine St...	34	Unlimited	96	Yes	N/A	two4	C2CUK67	C:\Documents an...
Ruth Thomas	0	Unlimited	160	No	N/A	test-S5	C2CUK11	C:\Documents an...
Sarah Clarke	5	Unlimited	21329	No	N/A	Backup	C2CUK03	C:\Documents an...
Philipa Brady	0	Unlimited	80	No	N/A	Pers...	C2CUK05	C:\Documents an...
Norman Tea...	0	Unlimited	5225	No	N/A	Backup	C2CUK55	C:\Documents an...
Stephen Col...	0	Unlimited	265	No	N/A	Test	C2CUK29	C:\Documents an...
Louis Norton	0	50000	6465	No	N/A	fsdds	C2CUK44	C:\Documents an...
Gary Olds	0	2000	96	No	N/A	two3	C2CUK23	C:\Documents an...
Martin Allen	0	Unlimited	265	No	N/A	babw...	C2CUK86	C:\Documents an...
Joe Richards	0	Unlimited	265	No	N/A	Pers...	C2CUK26	C:\Documents an...
David Angers	11	Unlimited	5225	No	N/A	new	C2CUK24	C:\Documents an...
Zed Hills	0	Unlimited	64745	No	N/A	All	C2CUK93	C:\Documents an...
Tony Underhill	0	Unlimited	6217	No	N/A	gbo l...	C2CUK54	C:\Documents an...
Jackie Lister	0	Unlimited	10433	No	N/A	c2c	C2CUK46	C:\Documents an...
Dawn Painter	5	Unlimited	1323345	No	N/A	Large	C2CUK69	C:\Documents an...
Mike Jones	0	Unlimited	2480	No	N/A	test-...	C2CUK09	C:\Documents an...
Mandy Reed	0	Unlimited	336	No	N/A	olapr...	C2CUK88	C:\Documents an...
Journal	0	Unlimited	96	No	N/A	two	C2CUK97	C:\Documents an...

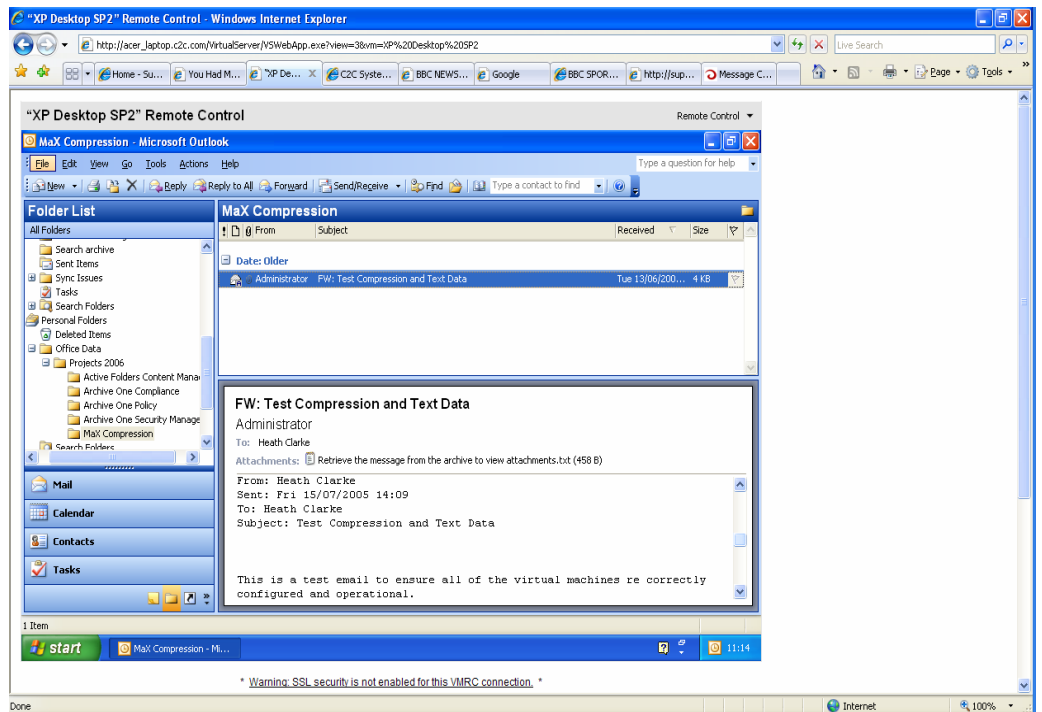
Archive One identifies ownership of PST files and imports messages under the owners mailbox id

More Information:
www.re-soft.com/archive

System Requirements:

- Windows 2000, XP or above
- Supports Exchange 5.5 and up.

© C2C Systems Ltd.



Archive One optionally adds a stub message to the users mailbox to allow self-service retrieval of old mailbox and PST messages

Archive One Policy - Federated search

The Federated Search Provider allows Microsoft Search Server 2008, Microsoft Search Server 2008 Express, Microsoft Office SharePoint Server 2007 (MOSS) and Internet Explorer's "custom search providers" to pass search queries directly to Archive One and display returned results, making it fast and easy to connect to archived email data;

- A Search Connector, which allows search servers such as Microsoft Search Server and Windows Search access to the Archive One index in order for them to build index data within their own servers for the fastest corporate data searching for the users;
- A Google Search plug-in for search access to the email archive from Google Desktop and Enterprise;
- Support for the OpenSearch v1.1 standard which allows any application supporting this standard to gain access to the archive data.

Archive One Policy - Laptop Sync Option

- Allows a users centralized archive to be synchronized to the user's laptop.
- User can then access archived mail from the local copy when not connected to the network

Low Cost of Ownership

Archive One is built with low Total Cost of Ownership as a prime objective. It has no complex database pre-requisites and is simple to install and administer on an on-going basis. Archive One Policy leverages your existing email and storage investment to optimize use of your current environment.

Archive One Policy can archive to a variety of near-line or offline storage media as appropriate, either directly or through industry standard storage management software such as HP OpenView Storage Data Protector and QStar.