



EDISCOVERY LEGAL SOLUTIONS FROM RESOFT INTERNATIONAL

ReSoft offers tools to assist in:

- Searching for content in Microsoft Exchange & Lotus Notes email files & PSTs
- Searching for content in unstructured documents in network shares
- Tracking email distribution threads – who sends what to whom
- Retrieving and searching for content from backup tapes

More Information:
www.re-soft.com/discover

ReSoft's has for over 13 years focused on acting as a trusted advisor to hundreds of organizations, supplying email and security software solutions & services that reduce risk, are quickly deployed, are reasonably priced and functionally rich.

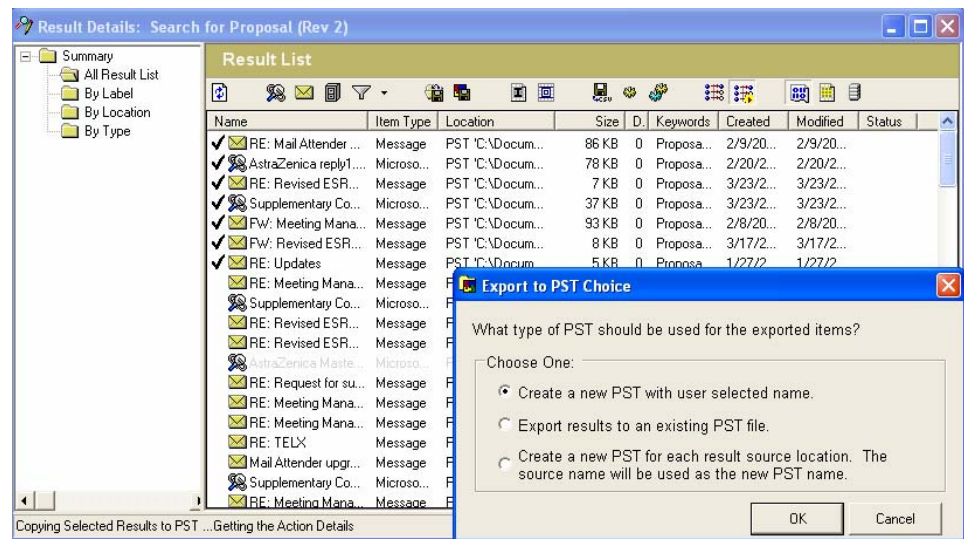
The persistence of the electronic record and the routine recovery of electronic communications in connection with almost every business dispute or investigation means that the litigation complications recently faced by certain investment firms and pharmaceutical manufacturers as a result of problematic e-mails are now becoming commonplace. A recent study by Law Firm Fulbright & Jaworski LLC supports the need for effective Email Archiving & Discovery tools. It suggests:

- Nearly 90% of all US companies are engaged in some sort of litigation
- A corporation with \$1.5 billion in revenues averages more than \$8m per year in Corporate Litigation Costs
- The average \$1 billion-per-year Company faces more than 140 cases in the US at once
- Electronic Discovery was the number one new litigation-related issue for companies with over \$100 in revenue

E-DISCOVERY SOLUTIONS FROM RESOFT INTERNATIONAL

ReSoft has built a portfolio of EDiscovery solutions to:

Search Microsoft Exchange, Lotus Notes & PST files - Discovery Attender is an electronic discovery tool designed to make the searching, viewing and supervision of electronic data easy and efficient. It is intended to perform dynamic keyword searches in common file storage areas, Exchange mailboxes, Lotus Notes mail files, Exchange Public Folders and PST files.



Discovery Attender can automatically execute powerful scans of message subject, body, attachments and file type through customizable criteria. Once relevant information is located, it can report, open, copy or move the data to a secure location for further investigation.

Search Backup Files without restoring to the Exchange server. One of the most time-consuming collection activities is in restoring multiple backup tapes to an Exchange server so they can be searched. Our solution will restore, copy and search un-mounted Exchange edb databases. It let's you search and restore a single folder, or any number of messages and attachments to any PST or mailbox on the network.

The ReSoft process was informative and efficient, and helped us to meet an urgent deadline.

Scott Cuomo
Seward & Kissel LLP

The product runs like a champ. It does the job perfectly.

Steven Platt
Billingsley Company

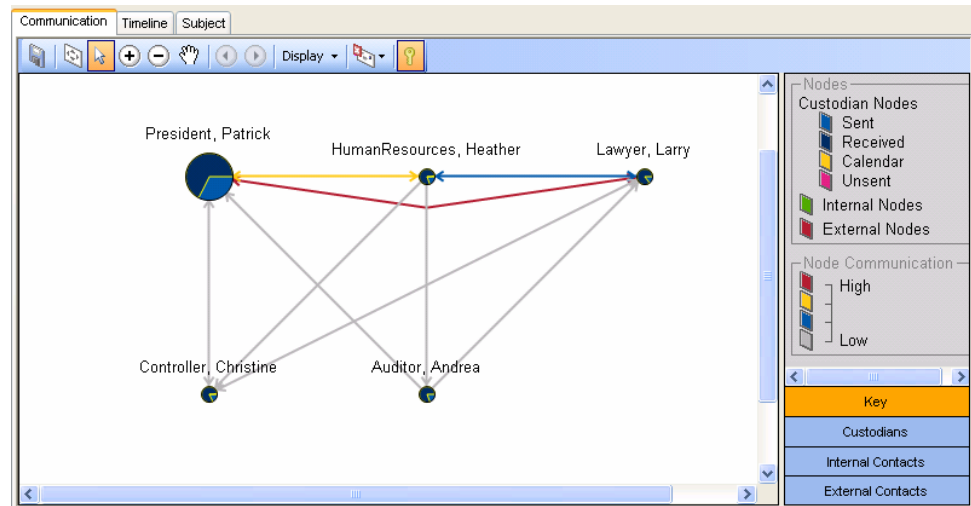
ReSoft made my software purchase extremely easy...I was up and running within minutes!

Damien Noble
Force Protection Inc.

Your product was great and helped us gather some really important information.

Stephen Powers
Powers Fasteners Inc.

Do Advanced Email Analysis for Internal Early Case Assessment & Investigations. Go beyond basic search by analyzing the dominant themes relating to communications between specific email parties, establishing the timeline for the events giving rise to the investigation or suit, graphically displaying communication lines between internal and external people and searching for combinations of key people, words, phrases, dates and times.



Classify, Search & Secure Documents On the Network - simplify the management of unstructured information, such as documents stored across the enterprise network. Periodically scan and index all network file shares to identify files with privacy data such as CC#, SS#, Driving License, DoB and Customer-id. Identify files to be retained for compliance and "Tag" files with additional metadata.

The screenshot shows the Kazeon Web UI interface. The main content area displays a report titled 'SummaryCoalByDocType' with a 'completed' status. The report includes a table with the following data:

File Type	Coalesced Size (MB)	Number of Duplicates	Savings	Number of Files	Total Size (MB)
Microsoft Outlook	5150.52	13665	12.34 %	26485	5875.58
PST/OST 2003	2371.31	10	2.94 %	28	2443.17
UNIX GZip	471.44	1	0.05 %	4	471.66
VVOL File	460.09	0	0.00 %	2	460.09
Unknown (ANSI 8)	293.02	254	31.41 %	2031	427.22
DLIS File	168.78	1	49.89 %	3	336.79
EBCDIC encoded Text	154.63	1	45.06 %	7	201.47
Text - 7-Bit File	125.07	593	24.87 %	1742	192.03
OVVOL File	190.54	0	0.00 %	1	190.54
MPEG Layer3	61.62	11	47.26 %	24	116.03
ID3 Ver 2.x	92.36	0	0.00 %	3	92.36
JPG File	90.45	0	0.00 %	5	90.45
UNIX Compress	82.40	0	0.00 %	1	82.40
SOS File	79.26	0	0.00 %	1	79.26
BAT File	62.16	9	14.63 %	67	72.81

Generate compliance reports showing all privacy and retention exposures and mine semi-structured file formats. Copy compliance records to WORM volumes and set retention dates. Move all privacy files and metadata to encrypted storage. Perform regular data integrity checks to detect corruptions or modifications.