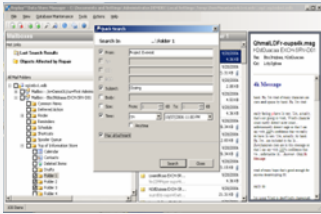


# Replay for Exchange™ Blackberry™ Enterprise Server Agent Recovering Wireless Email for Microsoft Exchange Users in Minutes



**“Exchange Downtime and associated recovery time wastes on average 100’s of hrs a year in unscheduled downtime and wasted productivity.”**  
Gartner

### System Requirements:

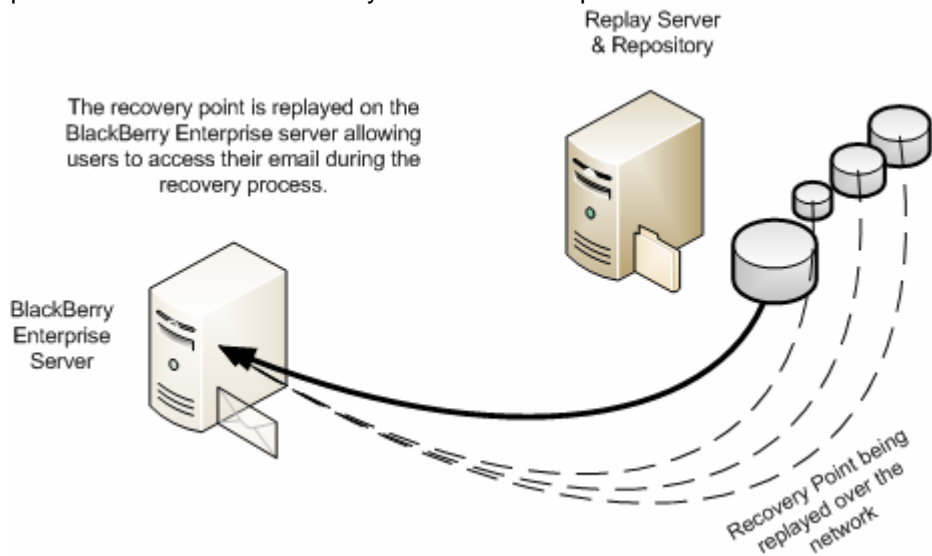
- Windows 2003 Server, SP2
- 100MB Free DiskSpace
- 1GB RAM
- 100MB disk space. Additional space is required store recovery points



**Point, Click, Restore**

### Leveraging the Value of *Replay*™ with BlackBerry Enterprise Server

*Replay* protects the BlackBerry Enterprise Server (BES) ensuring minimal data loss and dramatically reducing downtime related to failure or system outage. *Replay*™ utilizes its patent-pending continuous application protection technology to capture all of the volume level block changes on the BES server in real-time enabling state-full, point in time recovery in minutes. *Replay* is integrated with BES to help ensure that wireless email environments maintain the highest levels of availability, providing protection and flexible recovery at an affordable price.



### Recoverability for Wireless Email and BlackBerry with *Replay*

*Replay* for BES ensures that the BES server can be recovered from any failure in minutes. *Replay* protects all of the volumes on the BES server onto a *Replay* server that can be used to recover should a failure occur. The *Replay* server can reside on the LAN or WAN depending on your site protection strategy. *Replay* eliminates the need for slow and time consuming backups of BES by offloading the backups to the *Replay* recovery server.

Most importantly, *Replay* dramatically reduces user downtime with its instant replay technology which enables BES rollbacks from bare-metal to individual file in just minutes. In all cases, this approach does not require the reconfiguration of any BlackBerry handhelds or the RIM BlackBerry service.

**For More Information or to download your free Trial visit us on-line**  
<http://www.re-soft.com/replay>

ReSoft International LLC 203 972 8462 [www.re-soft.com/replay](http://www.re-soft.com/replay)  
© AppAssure Software, Inc.