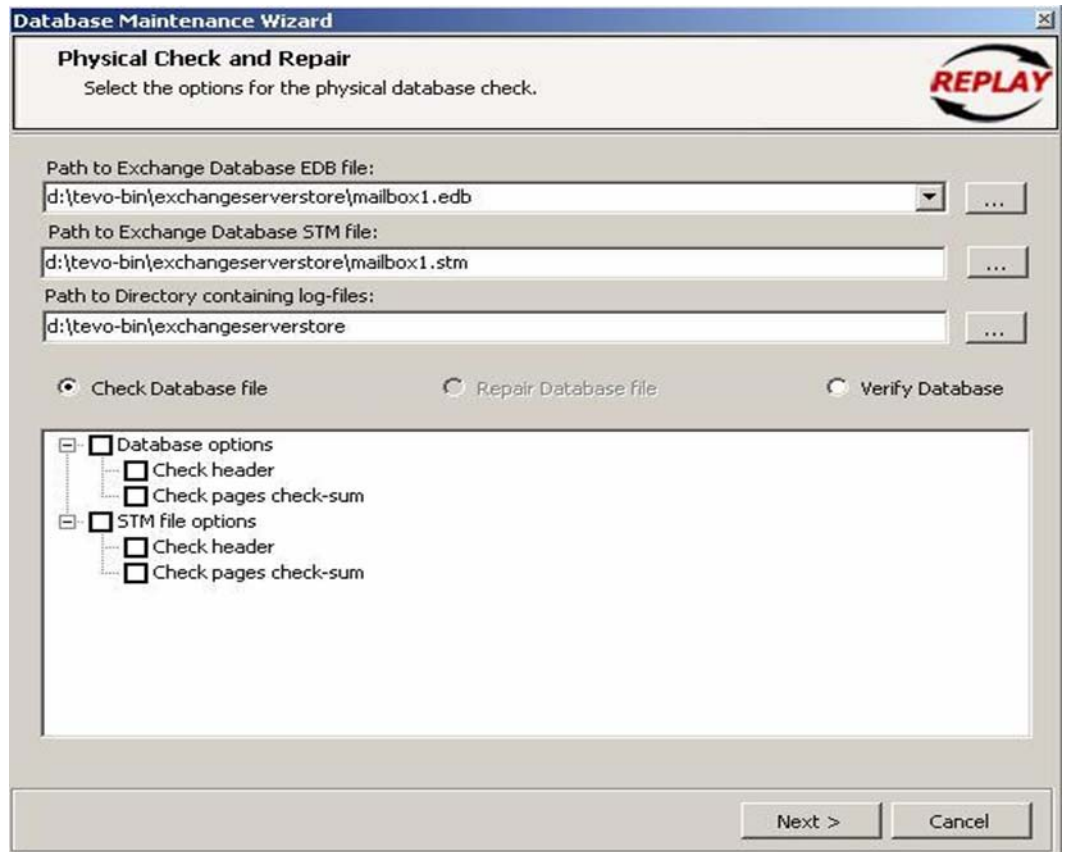


## Using *ReplayDSM*™ on Damaged EDB's and Logs

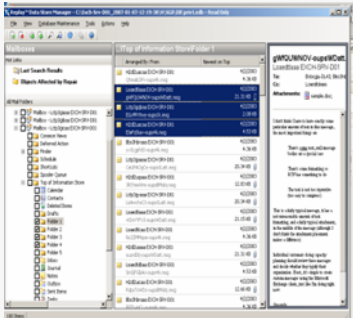
During the open process, ReplayDSM will attempt to mount the database just as Exchange would by applying the outstanding log files and then mounting the database. If the logs cannot be applied for any reason such as a corrupted log failed to apply, ReplayDSM will attempt a simple recovery by mounting the file without the log stream.

If all attempts to open the data store fail while attempting to attach the store, the ESE error is displayed and user is informed that the next possible step is to run physical check on the database.

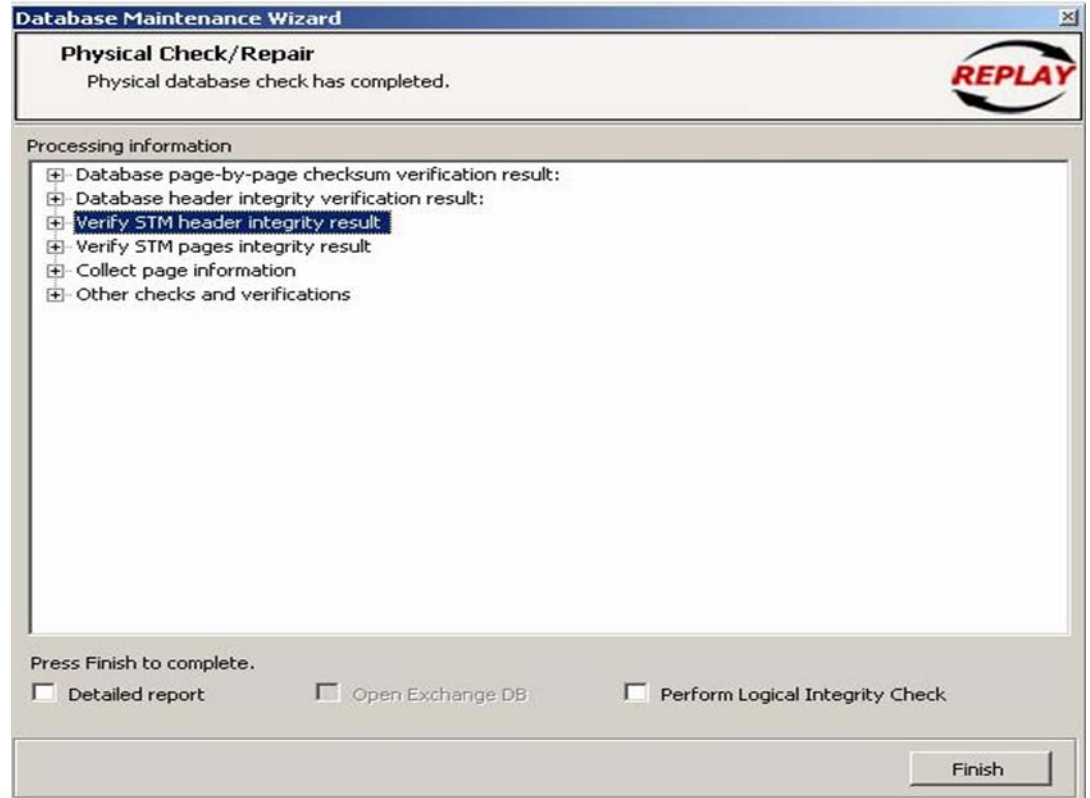
To identify corruption inside the database use the physical check functionality within ReplayDSM.



**Point, Click, Restore**



The Physical check will open the database as a flat file and compute and verify the CRC and ECC checksum on all pages in the EDB and STM and will also verify all EDB and STM header pages and their integrity. The results are displayed in the final dialog, allowing you to estimate the damage to a database if any.



If excessive damage has occurred, mount the recovery point as writable and run ESEUTIL against the data store.



**Point, Click, Restore**

**For More Information or to download your free Trial visit us on-line**  
<http://www.resoft.com/replaydsm>

Contact ReSoft International LLC  
Phone: 203 972 8462 FAX (203) 286-1918