



PST SEARCH, PST ELIMINATION, PST SIZE REDUCTION, REMOVE PST FILES, SEARCH PST FILES - SOLUTIONS FROM RESOFT INTERNATIONAL

PST files are proving to be one of the most troublesome file types to manage.

Over time, PST files become a significant issue to the Legal, HR & IT Support groups. PSTs can be saved anywhere on the network that the user decides. However:

- *they may contain valuable or confidential information that needs to be available to other users;*
- *they may contain important information relating to a Legal case;*
- *most likely they will not be regularly backed up, resulting in the risk of data loss or corruption.*

ReSoft offers tools to assist in:

- *PST size management*
- *Searching content of PST files*
- *PST elimination*
- *PST recovery*
- *PST deletion*

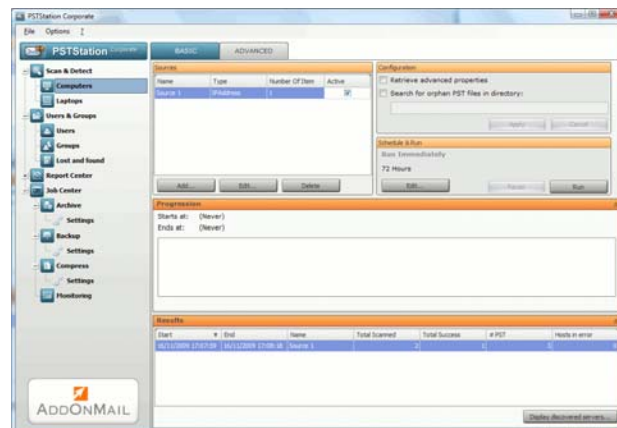
More Information:
www.re-soft.com/pst

ReSoft's has for over 13 years focused on acting as a trusted advisor to hundreds of organizations, supplying email and security software solutions & services that reduce risk, are quickly deployed, are reasonably priced and functionally rich.

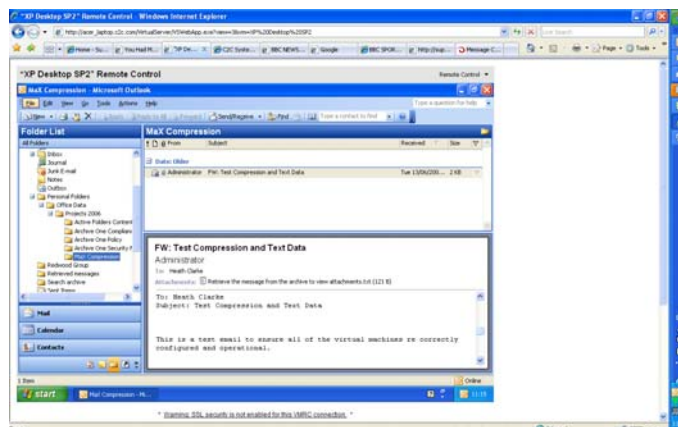
The persistence of the electronic record and the routine recovery of electronic communications in connection with almost every business dispute or investigation means that the litigation complications recently faced by certain investment firms and pharmaceutical manufacturers as a result of problematic e-mails are now becoming commonplace. PST files are proving to be one of the most troublesome file types to manage.

PST SEARCH, PST ELIMINATION, PST SIZE REDUCTION, REMOVE PST FILES, SEARCH PST FILES - SOLUTIONS FROM RESOFT INTERNATIONAL

Discover the Location and Properties of PST files, then Replicate. Detect all PSTs stored on workstations or corporate shared file servers. Detect PST files either from live Outlook profiles, or by scanning directories. Administrators can select either a computer, a user or just one PST to back up. To backup PSTs stored on a server, simply select the root directory on the remote server. Backup can be a full or an incremental. Client software allows you to back up PST files while Outlook is in use on the remote workstation.



Migrate PSTs to a Centralized Archive System. Messages can be moved out of the PSTs into a centrally managed Archive and full-text indexed. A small shortcut or stub message is put into a folder in the user's Exchange mailbox. All the original folder hierarchy is captured in this new folder, so the user can navigate to the appropriate folder and click on the stub message. This will automatically launch the message in Outlook.



The ReSoft process was informative and efficient, and helped us to meet an urgent deadline.

Scott Cuomo
Seward & Kissel LLP

The product runs like a champ. It does the job perfectly.

Steven Platt
Billingsley Company

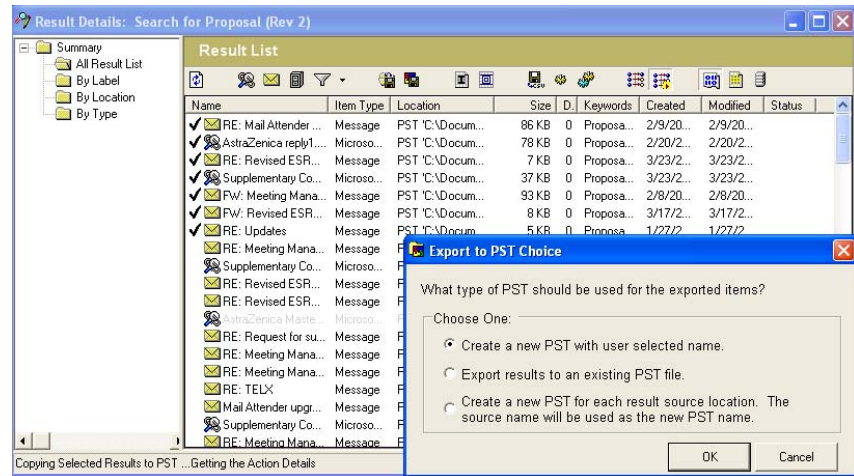
ReSoft made my software purchase extremely easy...I was up and running within minutes!

Damien Noble
Force Protection Inc.

Your product was great and helped us gather some really important information.

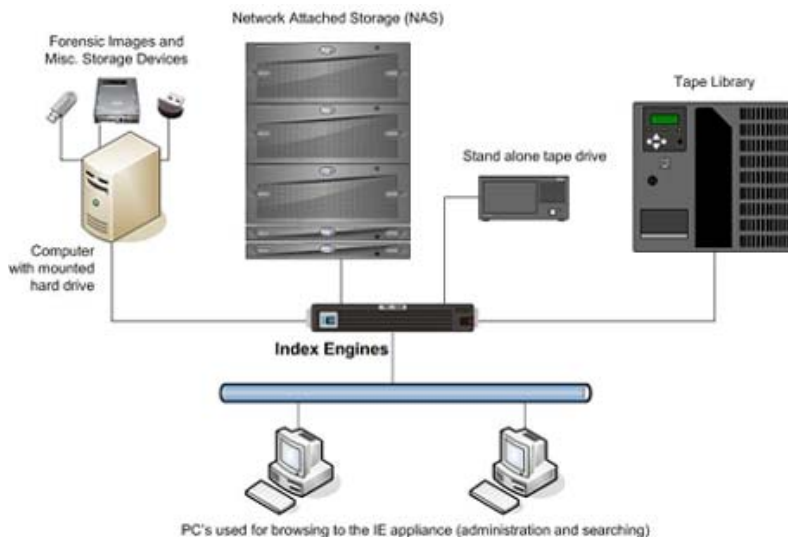
Stephen Powers
Powers Fasteners Inc.

Search content of existing PST files - Discovery Attender is an electronic discovery tool designed to make the searching, viewing and supervision of electronic data easy and efficient. It is intended to perform dynamic keyword searches in PST files as well as common file storage areas, Exchange mailboxes & Lotus Notes mail files.



Discovery Attender can automatically execute powerful scans of message subject, body, attachments and file type through customizable criteria. Once relevant information is located, it can report, open, copy or move the data to a secure location for further investigation.

Classify, Search & Secure Emails in PST files & Documents On the Network - simplify the management of unstructured information, such as documents stored across the enterprise network. Periodically scan and index all network file shares to identify files with privacy data such as CC#, SS#, Driving License, DoB and Customer-id. Identify files to be retained for compliance and "Tag" files with additional metadata.



Generate compliance reports showing all privacy and retention exposures and mine semi-structured file formats. Copy compliance records to WORM volumes and set retention dates. Move all privacy files and metadata to encrypted storage. Perform regular data integrity checks to detect corruptions or modifications.